

ROLLS®

neo

19<sub>mm</sub> / 28<sub>mm</sub> / 35<sub>mm</sub> diameter  
M E T A L P O L E S



S I M P L Y | M I N I M A L

NEO IS AN AFFORDABLE RANGE OF SIMPLY MINIMAL METAL CURTAIN POLES AND CO-ORDINATED ACCESSORIES REFLECTING THE DESIRE FOR SLEEK DESIGN IN THE MODERN HOME.



C O L O U R S



Black Nickel Effect



Chrome Effect



Spun Brass Effect



Stainless Steel Effect

THE 19MM, 28MM & 35MM RANGES ARE AVAILABLE IN FOUR CONTEMPORARY METAL FINISHES WITH A CHOICE OF FOUR FINIAL DESIGNS IN EACH DIAMETER.

F I N I A L S



Ball  
19mm

Ball  
28mm/35mm



Bullet



Stud



Trumpet

THE QUALITY OF  
THE METAL AND  
THE ATTENTION  
TO DETAIL IN THE  
FITTINGS MAKE NEO  
A PLEASURE TO  
INSTALL AND USE.



**NEO POLES** ARE MADE FROM HEAVY GAUGE METAL; THE STAINLESS STEEL EFFECT POLE USES A REAL STAINLESS STEEL FOIL AND THE OTHER FINISHES ARE ELECTRO-PLATED MAKING THEM MORE DURABLE AND LESS PRONE TO CHIPPING.





## Quality Rings:

The solid, fixed eyelet (28mm and 35mm only), metal rings are lined with nylon so that they run quietly and smoothly.



## Quality Brackets:

The brackets shown, are solid cast. The extendable cup bracket (available in 28mm only) shown, enables the pole to be fixed to uneven points on your wall.



# 19mm

COMPLETE PACK

## THE COMPLETE PACK

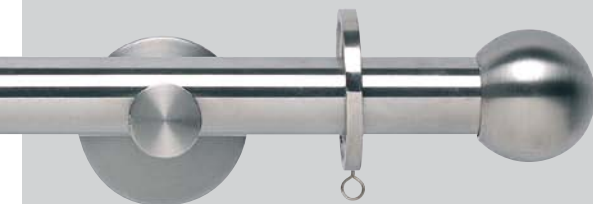
INCLUDES EVERYTHING YOU NEED  
TO INSTALL YOUR CURTAIN POLE,  
INCLUDING BRACKETS AND RINGS.

| Size (cm) |     |     |     |
|-----------|-----|-----|-----|
| 120       | 180 | 240 | 300 |



19mm pole suitable for light and medium weight  
curtains up to 11kgs

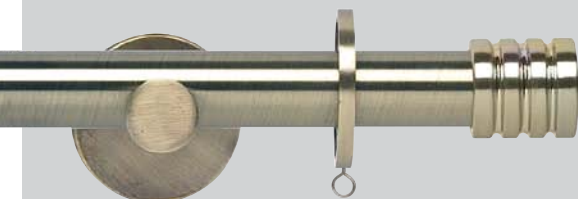
Comes with Cylinder Bracket



**Ball** (Shown in Stainless Steel)  
Stainless Steel Effect **7100R/Size**  
Spun Brass Effect **7102R/Size**  
Chrome Effect **1662R/Size**  
Black Nickel Effect **1680R/Size**



**Bullet** (Shown in Black Nickel)  
Stainless Steel Effect **7106R/Size**  
Spun Brass Effect **7108R/Size**  
Chrome Effect **1664R/Size**  
Black Nickel Effect **1682R/Size**



**Stud** (Shown in Spun Brass)  
Stainless Steel Effect **7103R/Size**  
Spun Brass Effect **7105R/Size**  
Chrome Effect **1663R/Size**  
Black Nickel Effect **1681R/Size**



**Trumpet** (Shown in Chrome)  
Stainless Steel Effect **7109R/Size**  
Spun Brass Effect **7111R/Size**  
Chrome Effect **1665R/Size**  
Black Nickel Effect **1683R/Size**



**Ball** (Shown in Stainless Steel)

Stainless Steel Effect **1606R/Size**

Spun Brass Effect **1607R/Size**

Chrome Effect **2155R/Size**

Black Nickel Effect **2175R/Size**



**Bullet** (Shown in Chrome)

Stainless Steel Effect **1602R/Size**

Spun Brass Effect **1603R/Size**

Chrome Effect **2153R/Size**

Black Nickel Effect **2173R/Size**



| Size (cm) |     |     |     |
|-----------|-----|-----|-----|
| 120       | 180 | 240 | 300 |

**Stud** (Shown in Black Nickel)

Stainless Steel Effect **1600R/Size**

Spun Brass Effect **1601R/Size**

Chrome Effect **2152R/Size**

Black Nickel Effect **2172R/Size**



**Trumpet** (Shown in Spun Brass)

Stainless Steel Effect **1604R/Size**

Spun Brass Effect **1605R/Size**

Chrome Effect **2154R/Size**

Black Nickel Effect **2174R/Size**

**28**mm  
**COMPLETE PACK**  
 Comes with Extendable  
 Cup Bracket



28mm pole suitable for light and medium weight curtains up to 11kgs.

# 35mm

COMPLETE PACK



**Ball** (Shown in Black Nickel)  
 Stainless Steel Effect 2195R/Size  
 Spun Brass Effect 2503R/Size  
 Chrome Effect 2520R/Size  
 Black Nickel Effect 2547R/Size

Comes with Cylinder Bracket



**Bullet** (Shown in Spun Brass)  
 Stainless Steel Effect 2193R/Size  
 Spun Brass Effect 2501R/Size  
 Chrome Effect 2518R/Size  
 Black Nickel Effect 2545R/Size

| Size (cm) |     |     |     |      |
|-----------|-----|-----|-----|------|
| 120       | 180 | 240 | 300 | 360* |

## PACK CONTENTS FOR ALL POLE DIAMETERS

| Pole Size     | 120cm | 180cm | 240cm | 300cm | 360cm* |
|---------------|-------|-------|-------|-------|--------|
| Poles         | 1     | 1     | 2     | 2     | 2      |
| Joining Piece |       |       | 1     | 1     | 1      |
| Brackets      | 2     | 2     | 3     | 3     | 3      |
| Rings         | 12    | 18    | 24    | 30    | 36     |
| Finials       | 2     | 2     | 2     | 2     | 2      |

\*360cm pole only available in 35mm diameter



**Stud** (Shown in Stainless Steel)  
 Stainless Steel Effect 2192R/Size  
 Spun Brass Effect 2500R/Size  
 Chrome Effect 2517R/Size  
 Black Nickel Effect 2544R/Size



**Trumpet** (Shown in Chrome)  
 Stainless Steel Effect 2194R/Size  
 Spun Brass Effect 2502R/Size  
 Chrome Effect 2519R/Size  
 Black Nickel Effect 2546R/Size



35mm Suitable for light, medium and heavy weight curtains 11kgs and over.

# 28mm

## EYELET POLE COMPLETE PACK

A 28mm complete pole pack without the rings to allow for an eyelet curtain heading. The bracket is an extendable cup with up to 155mm extension from wall to allow for depth of heading.

| Size (cm) |     |     |     |
|-----------|-----|-----|-----|
| 120       | 180 | 240 | 300 |

300cm pole comes in two pieces that are joined together with a connector (supplied in the pack).

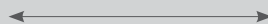


### Bullet

|                        |            |
|------------------------|------------|
| Stainless Steel Effect | 1629R/Size |
| Spun Brass Effect      | 1630R/Size |
| Chrome Effect          | 2156R/Size |
| Black Nickel Effect    | 2176R/Size |

### Ball

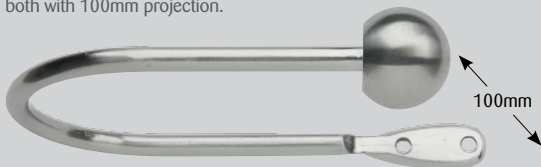
|                        |            |
|------------------------|------------|
| Stainless Steel Effect | 1631R/Size |
| Spun Brass Effect      | 1632R/Size |
| Chrome Effect          | 2151R/Size |
| Black Nickel Effect    | 2171R/Size |



128mm to 155mm fully extended

## HOLDBACKS (PAIRS) – Finish off the look with a co-ordinating hold back.

Two sizes available: 140mm and 280mm, both with 100mm projection.



140mm / 280mm



### Ball (Shown in Stainless Steel)

|                        | 140mm | 280mm |
|------------------------|-------|-------|
| Stainless Steel Effect | 6521R | 6537R |
| Spun Brass Effect      | 6522R | 6538R |
| Chrome Effect          | 6523R | 6539R |
| Black Nickel Effect    | 6524R | 6540R |



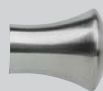
### Stud (Shown in Stainless Steel)

|                        | 140mm | 280mm |
|------------------------|-------|-------|
| Stainless Steel Effect | 6529R | 6545R |
| Spun Brass Effect      | 6530R | 6546R |
| Chrome Effect          | 6531R | 6547R |
| Black Nickel Effect    | 6532R | 6548R |



### Bullet (Shown in Stainless Steel)

|                        | 140mm | 280mm |
|------------------------|-------|-------|
| Stainless Steel Effect | 6525R | 6541R |
| Spun Brass Effect      | 6526R | 6542R |
| Chrome Effect          | 6527R | 6543R |
| Black Nickel Effect    | 6528R | 6544R |



### Trumpet (Shown in Stainless Steel)

|                        | 140mm | 280mm |
|------------------------|-------|-------|
| Stainless Steel Effect | 6533R | 6549R |
| Spun Brass Effect      | 6534R | 6550R |
| Chrome Effect          | 6535R | 6551R |
| Black Nickel Effect    | 6536R | 6552R |

# NEO COMPONENT RANGE

NEO WORKS WITH MOST WINDOW SHAPES AND SIZES INCLUDING BAYS AND RECESSES. IF YOU WANT SOMETHING DIFFERENT TO THE COMPLETE PACK YOU CAN MAKE YOUR OWN FROM COMPONENTS...

**SINGLE POLE** - Need to fix a wider window span? Prefer the cylinder bracket to the extendable 28mm bracket? Shown in 28mm Stainless Steel Effect with extendable Cup Bracket with Ball finial.



**WALL FIXED** - There are two types of wall bracket: the cylinder bracket and the 28mm only extendable cup bracket. Both are suitable as side or centre brackets.

| Item        | You will need:  |
|-------------|---|
| a. Pole     | Depends on window size. Single poles come in lengths of 120/150/180/240cm (Stainless Steel effect is also available in 500cm). For longer lengths two poles can be joined to make spans of up to 480cm. |
| b. Finials  | 1 pair  |
| c. Brackets | 2 brackets for single pole lengths, otherwise 3.  |
| d. Rings    | 1 ring per 10cm   |
| e. Joiner   | If joining two poles together   |



19, 28 & 35mm



**CEILING FIXED** - Use a ceiling bracket where there is limited space above the window or where the wall is weak.

As Wall Fixed but use Ceiling Bracket(s).

c.



**RECESS FIXED** - Enables pole to be fixed between walls, or to a side wall at one side.

As Wall Fixed but 1 recess bracket at each end. Centre bracket dependent on pole length.

c.



19 mm



28 & 35mm

## 19/28MM DOUBLE POLE

A double layer of curtains can be used for extra privacy, light filtering, warmth or simply for effect. A 28mm pole hangs at the front with a 19mm pole at the back. Used on straight windows.



| Item        | You will need:  |
|-------------|---|
| a. Pole     | 19mm pole & 28mm pole. Quantity depends on window size. Single poles come in lengths of 120/150/180/240cm. For longer lengths two poles can be joined to make spans of up to 480cm. |
| b. Finials  | 1 x 19mm pair (suggest 'Stud'), 1 x 28mm pair   |
| c. Brackets | 2/3 Double Brackets dependent on pole length  |
| d. Rings    | 1 ring per 10cm   |
| e. Joiner   | If joining two poles together   |

c.



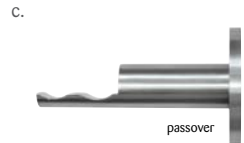
# BAY WINDOWS

Corner elbow joints, passing brackets and passing rings can be used to fit Neo to bay windows. As the corner joint is an 'elbow' design the curtain will need to be helped around it. Suitable for 2 bend bays; fixes to wall.



Works with 2 bend bays with up to 60° bends

| Item        | You will need:  |
|-------------|---|
| a. Pole     | Dependent on bay width. Single poles come in lengths of 120/150/180/240cm (Stainless Steel effect is also available in 500cm). Poles will need to be cut to size and joined at corner joints and in the centre. |
| b. Finials  | 1 pair  |
| c. Brackets | 4 Passover (one either side of corner joint). Used with the passing rings to allow the curtain to run past the brackets. 3 Wall brackets (2 at each side and 1 centre)  |
| d. Rings    | 'C' Passing Rings. Passing Rings - 1 ring per 10cm. Allow the curtains to pass over the brackets.   |
| e. Joiner   | If joining two poles together   |



19, 28 & 35mm



19mm



28 & 35mm

## COMPONENTS ORDERING EXAMPLE

Follow the 'You will Need' guide. The catalogue numbers are overleaf.

"I want to order a 28mm, Stainless Steel pole for a bay window. The window measures 3 metres."

### Step 1: The Pole

Select pole diameter & finish. When taking note of code add length of pole(s) required to item code.

| Chosen Style                     | Catalogue Number | Quantity Needed |
|----------------------------------|------------------|-----------------|
| 28mm, Stainless Steel Finish, 3m | 2130R/150        | 2               |

### Step 2: Finials

Select finial designs & finish.

| Chosen Style                               | Catalogue Number | Quantity Needed |
|--|------------------|-----------------|
| Ball Finials, 28mm, Stainless Steel Finish | 2131R            | 1 Pair          |

### Step 3: Brackets

Select brackets & finish.

| Chosen Style                                    | Catalogue Number | Quantity Needed |
|---|------------------|-----------------|
| Passover Brackets, 28mm, Stainless Steel Finish | 1622R            | 4               |
| Wall Brackets, 28mm cup, Stainless Steel Finish | 1618R            | 3               |

### Step 4: Rings

Select rings & finish.

| Chosen Style                          | Catalogue Number | Quantity Needed |
|---------------------------------------|------------------|-----------------|
| C Rings, 28mm, Stainless Steel Finish | 1620R            | 5 Packs         |
| 28mm Stainless Steel rings            | 1608R            | 1 Pack          |

### Step 5: Joiner

Select joiner.

| Chosen Style | Catalogue Number | Quantity Needed |
|--------------|------------------|-----------------|
| Joiner, 28mm | 2135R            | 1               |

### Step 6: Corner Joints

Select corner joints & finish.

| Chosen Style                                    | Catalogue Number | Quantity Needed |
|---|------------------|-----------------|
| Bay Corner Joints, 28mm, Stainless Steel Finish | 1610R            | 2               |

### Step 7: Holdbacks

Select matching holdback designs & finish (see Holdbacks page for codes).

| Chosen Style                           | Catalogue Number | Quantity Needed |
|--|------------------|-----------------|
| Ball Holdbacks, Stainless Steel Finish | 6521R            | 1 Pair          |

## POLE ONLY



| Pole Length (cm) |     |     |     |      |
|------------------|-----|-----|-----|------|
| 120              | 150 | 180 | 240 | 500* |

| Pole Size                                       | 120cm   | 150cm   | 180cm   | 240cm   | 300cm   | 360cm   | 480cm   | 500cm*  |
|---|---------|---------|---------|---------|---------|---------|---------|---------|
| Component Pole Lengths                          | 1 x 120 | 1 x 150 | 1 x 180 | 1 x 240 | 2 x 150 | 2 x 180 | 2 x 240 | 1 x 500 |
| Joining Piece Needed                            |         |         |         |         | Yes     | Yes     | Yes     |         |
| Brackets Needed                                 | 2       | 2       | 2       | 2       | 3       | 3       | 3       |         |
| Packs of Rings (6 per pack, 10 rings per metre) | 2       | 3       | 3       | 4       | 5       | 6       | 8       |         |

\* This is a contract length designed to be cut down to size. It is available in stainless steel only.

| 19mm Pole Only         |            | 28mm Pole Only         |            | 35mm Pole Only         |            |
|------------------------|------------|------------------------|------------|------------------------|------------|
| Stainless Steel Effect | 1650R/size | Stainless Steel Effect | 2130R/size | Stainless Steel Effect | 2219R/size |
| Spun Brass Effect      | 1656R/size | Spun Brass Effect      | 2136R/size | Spun Brass Effect      | 2511R/size |
| Black Nickel Effect    | 2121R/size | Black Nickel Effect    | 2186R/size | Black Nickel Effect    | 2555R/size |
| Chrome                 | 1674R/size | Chrome                 | 2166R/size | Chrome                 | 2538R/size |

## FINIAL ONLY (pair)



### 19mm Finial Only

|                        | 19mm Ball<br>(length 29mm) | 19mm Bullet<br>(length 57mm) | 19mm Stud<br>(length 26mm)   | 19mm Trumpet<br>(length 47mm) |
|------------------------|----------------------------|------------------------------|------------------------------|-------------------------------|
| Stainless Steel Effect | 1651R                      | Stainless Steel Effect 1653R | Stainless Steel Effect 1652R | Stainless Steel Effect 1654R  |
| Spun Brass Effect      | 1657R                      | Spun Brass Effect 1655R      | Spun Brass Effect 1658R      | Spun Brass Effect 1660R       |
| Black Nickel Effect    | 2126R                      | Black Nickel Effect 2129R    | Black Nickel Effect 2127R    | Black Nickel Effect 2128R     |
| Chrome                 | 1675R                      | Chrome 1677R                 | Chrome 1676R                 | Chrome 1678R                  |

### 28mm Finial Only

|                        | 28mm Ball<br>(length 87mm) | 28mm Bullet<br>(length 91mm) | 28mm Stud<br>(length 34mm)   | 28mm Trumpet<br>(length 63mm) |
|------------------------|----------------------------|------------------------------|------------------------------|-------------------------------|
| Stainless Steel Effect | 2131R                      | Stainless Steel Effect 2133R | Stainless Steel Effect 2132R | Stainless Steel Effect 2134R  |
| Spun Brass Effect      | 2137R                      | Spun Brass Effect 2139R      | Spun Brass Effect 2138R      | Spun Brass Effect 2140R       |
| Black Nickel Effect    | 2187R                      | Black Nickel Effect 2189R    | Black Nickel Effect 2188R    | Black Nickel Effect 2190R     |
| Chrome                 | 2167R                      | Chrome 2168R                 | Chrome 2169R                 | Chrome 2170R                  |

### 35mm Finial Only

|                        | 35mm Ball<br>(length 105mm) | 35mm Bullet<br>(length 91mm) | 35mm Stud<br>(length 34mm)   | 35mm Trumpet<br>(length 63mm) |
|------------------------|-----------------------------|------------------------------|------------------------------|-------------------------------|
| Stainless Steel Effect | 2266R                       | Stainless Steel Effect 2268R | Stainless Steel Effect 2267R | Stainless Steel Effect 2269R  |
| Spun Brass Effect      | 2512R                       | Spun Brass Effect 2514R      | Spun Brass Effect 2513R      | Spun Brass Effect 2515R       |
| Black Nickel Effect    | 2556R                       | Black Nickel Effect 2557R    | Black Nickel Effect 2558R    | Black Nickel Effect 2559R     |
| Chrome                 | 2542R                       | Chrome 2543R                 | Chrome 2540R                 | Chrome 2541R                  |

# BRACKETS ONLY

## Cylinder Brackets

(single)



| 19mm cylinder bracket<br>(projection 92mm)<br>(backplate diameter 44mm) |       | 28mm cylinder bracket<br>(projection 122mm)<br>(backplate diameter 63mm) |       | 35mm cylinder bracket<br>(projection 122mm)<br>(backplate diameter 63mm) |       |
|---|-------|--|-------|--|-------|
| Stainless Steel Effect  | 7337R | Stainless Steel Effect   | 1612R | Stainless Steel Effect   | 2198R |
| Spun Brass Effect   | 7339R | Spun Brass Effect  | 1613R | Spun Brass Effect  | 2506R |
| Black Nickel Effect   | 1686R | Black Nickel Effect  | 2179R | Black Nickel Effect  | 2550R |
| Chrome  | 1668R | Chrome   | 2159R | Chrome   | 2523R |

## Cup Brackets

(single)



| 28mm cup bracket<br>(projection 128 - 155mm)<br>(backplate diameter 50mm) |       |
|---|-------|
| Stainless Steel Effect  | 1618R |
| Spun Brass Effect   | 1619R |
| Black Nickel Effect   | 2182R |
| Chrome  | 2162R |

## Passover Bracket

(single)



| 19mm<br>(projection 74mm)<br>(backplate diameter 44mm) |       | 28mm<br>(projection 112mm)<br>(backplate diameter 60mm) |       | 35mm<br>(projection 112mm)<br>(backplate diameter 64mm) |       |
|--|-------|---|-------|---|-------|
| Stainless Steel Effect                                 | 7347R | Stainless Steel Effect                                  | 1622R | Stainless Steel Effect                                  | 2210R |
| Spun Brass Effect                                      | 7348R | Spun Brass Effect                                       | 1623R | Spun Brass Effect                                       | 2509R |
| Black Nickel Effect                                    | 1690R | Black Nickel Effect                                     | 2184R | Black Nickel Effect                                     | 2553R |
| Chrome   | 1672R | Chrome  | 2164R | Chrome  | 2536R |

## Double Brackets

(single)



| 19/28mm (projection 138mm)<br>(backplate diameter 64mm) |       |
|---|-------|
| Stainless Steel Effect                                  | 1616R |
| Spun Brass Effect                                       | 1617R |
| Black Nickel Effect                                     | 2181R |
| Chrome  | 2161R |

## Ceiling Bracket

(single)



| 19mm<br>(projection 72mm)<br>(backplate diameter 43mm) |       | 28mm<br>(projection 77mm)<br>(backplate diameter 43mm) |       | 35mm<br>(projection 83mm)<br>(backplate diameter 44mm) |       |
|--|-------|--|-------|--|-------|
| Stainless Steel Effect                                 | 1624R | Stainless Steel Effect                                 | 1626R | Stainless Steel Effect                                 | 2211R |
| Spun Brass Effect                                      | 1625R | Spun Brass Effect                                      | 1627R | Spun Brass Effect                                      | 2510R |
| Black Nickel Effect                                    | 2120R | Black Nickel Effect                                    | 2185R | Black Nickel Effect                                    | 2554R |
| Chrome   | 1673R | Chrome   | 2165R | Chrome   | 2537R |

## Recess Brackets

(pair)



19mm



28mm & 35mm

| 19mm<br>(projection 30mm)<br>(backplate diameter 35mm) |       | 28mm<br>(projection 24mm)<br>(backplate diameter 42mm) |       | 35mm<br>(projection 24mm)<br>(backplate diameter 50mm) |       |
|--|-------|--|-------|--|-------|
| Stainless Steel Effect                                 | 7343R | Stainless Steel Effect                                 | 1614R | Stainless Steel Effect                                 | 2199R |
| Spun Brass Effect                                      | 7344R | Spun Brass Effect                                      | 1615R | Spun Brass Effect                                      | 2507R |
| Black Nickel Effect                                    | 1688R | Black Nickel Effect                                    | 2180R | Black Nickel Effect                                    | 2551R |
| Chrome   | 1670R | Chrome   | 2160R | Chrome   | 2141R |

## RINGS ONLY

### Rings (pack of 6)



|                        | 19mm  |                        | 28mm  |                        | 35mm  |
|------------------------|-------|------------------------|-------|------------------------|-------|
| Stainless Steel Effect | 7334R | Stainless Steel Effect | 1608R | Stainless Steel Effect | 2196R |
| Spun Brass Effect      | 7336R | Spun Brass Effect      | 1609R | Spun Brass Effect      | 2504R |
| Black Nickel Effect    | 1685R | Black Nickel Effect    | 2177R | Black Nickel Effect    | 2548R |
| Chrome                 | 1667R | Chrome                 | 2157R | Chrome                 | 2521R |

### 'C' Rings (pack of 6) only for use with cylinder brackets



|                        | 19mm  |                        | 28mm  |                        | 35mm  |
|------------------------|-------|------------------------|-------|------------------------|-------|
| Stainless Steel Effect | 7345R | Stainless Steel Effect | 1620R | Stainless Steel Effect | 2200R |
| Spun Brass Effect      | 7346R | Spun Brass Effect      | 1621R | Spun Brass Effect      | 2508R |
| Black Nickel Effect    | 1689R | Black Nickel Effect    | 2183R | Black Nickel Effect    | 2552R |
| Chrome                 | 1671R | Chrome                 | 2163R | Chrome                 | 2535R |

## JOINERS & CORNER JOINTS ONLY

### Joiner (single)

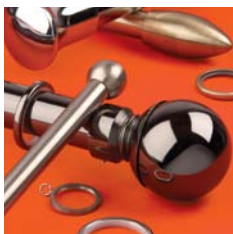


|            | 19mm<br>(length 98mm) |            | 28mm<br>(length 120mm) |            | 35mm<br>(length 120mm) |
|------------|-----------------------|------------|------------------------|------------|------------------------|
| One Colour | 1661R                 | One Colour | 2135R                  | One Colour | 2208R                  |

### Bay Corner Joint (single)



|                        | 19mm  |                        | 28mm  |                        | 35mm  |
|------------------------|-------|------------------------|-------|------------------------|-------|
| Stainless Steel Effect | 7340R | Stainless Steel Effect | 1610R | Stainless Steel Effect | 2197R |
| Spun Brass Effect      | 7342R | Spun Brass Effect      | 1611R | Spun Brass Effect      | 2505R |
| Black Nickel Effect    | 1687R | Black Nickel Effect    | 2178R | Black Nickel Effect    | 2549R |
| Chrome                 | 1669R | Chrome                 | 2158R | Chrome                 | 2522R |



neo

Ref: 000004NEO8/12

— HALLIS HUDSON —

Hallis Hudson Group Ltd, Unit B1, Red Scar Business Park, Preston, Lancashire PR2 5NJ

www.hallishudson.com